

## PRODUCT INFORMATION

# 3D scanner: 3DSL-ScanProHD

Product name: 3DSL-ScanProHD



Good for damage assessment of

- Pressure vessels
- Storage tanks
- Piping
- Steel bridges
- Concrete buildings
- And more objects

### Use scene

Hold the scanner about 500mm away and start pattern projection. Move slowly to get wide area scanning.

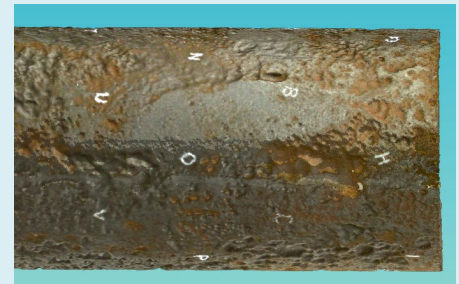
2. Move above the target



Corroded pipe

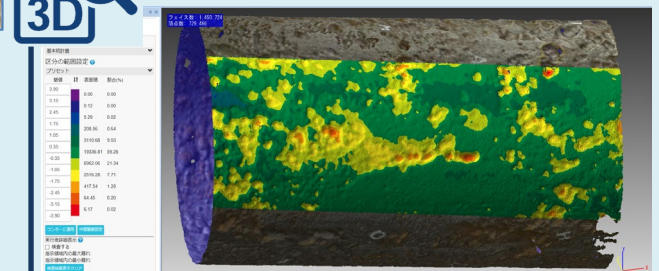
1. Start projection

3D



3D data with color texture

3D ?



Analysis result (color map)

SEIKOWAVE K.K., Tokyo, Japan

<https://seikowave.jp>

## 3D scanner: 3DSL-ScanProHD

### Product name: 3DSL-ScanProHD

#### 【Features】

- Structured Light Pattern Projection Method (white light by embedded LED)
- For proximity/non-contact measurement
- Handheld mode/Fixed mode (Fixed mode can be linked with turntable, included)
- HD scan mode/Rapid scan mode (Rapid scan mode is only available with handheld mode)
- Full-color texture
- Analysis software line up:
  - ・POLYGONALmeister® (Depth analysis) (standard)
  - ・uni-Fitness® (API-579 / ASME FFS-1 compliant evaluation software) (optional)

#### Specification of scanning mode

Items	HD Scan Mode	Rapid Scan Mode	Fixed Scan Mode
Mesh length	0.2mm ~ 3mm	0.25mm ~ 3mm	0.24mm
Deviation (scanner)	±0.05mm	±0.1mm	±0.04mm
Deviation (after analysis)	±0.1mm	±0.1mm ~ ±0.2mm	±0.1mm
Working distance	About 510mm	About 510mm	About 510mm
Scan depth (Depth of field)	100mm	100mm	100mm
One-shot scanning area	209mm x 160mm ~ 310mm x 240mm	209mm x 160mm ~ 310mm x 240mm	209mm x 160mm ~ 310mm x 240mm

Dimension of the scanner body: 250mm [H] x 155mm [L] x 50mm [D]

Weight of the scanner body (cable included): 1,250g

Turn table, mini tripod, calibration plate and markers are included in the hard carrying case. PC is selectable (with or without).

Contact:

SEIKOWAVE K.K.  
 TEL: +81-42-595-7041  
 Email: sales@seikowave.jp

