

ユーザが定義可能なカラーバーの範囲

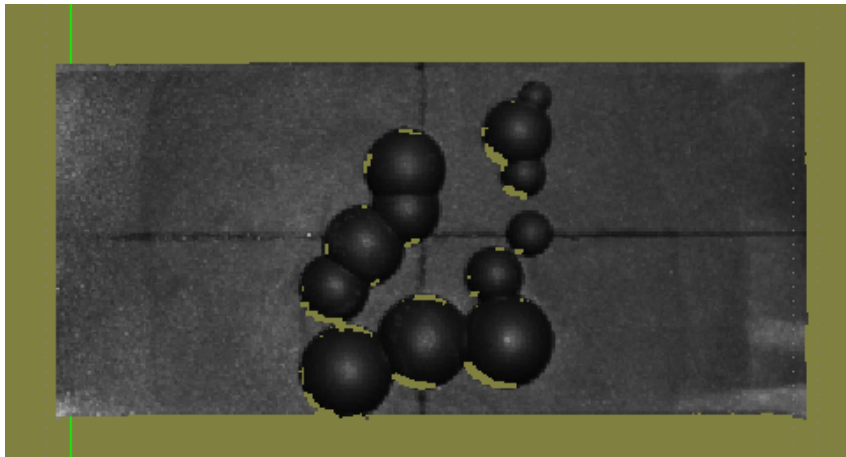
Application Note 10

株式会社セイコーウェーブ

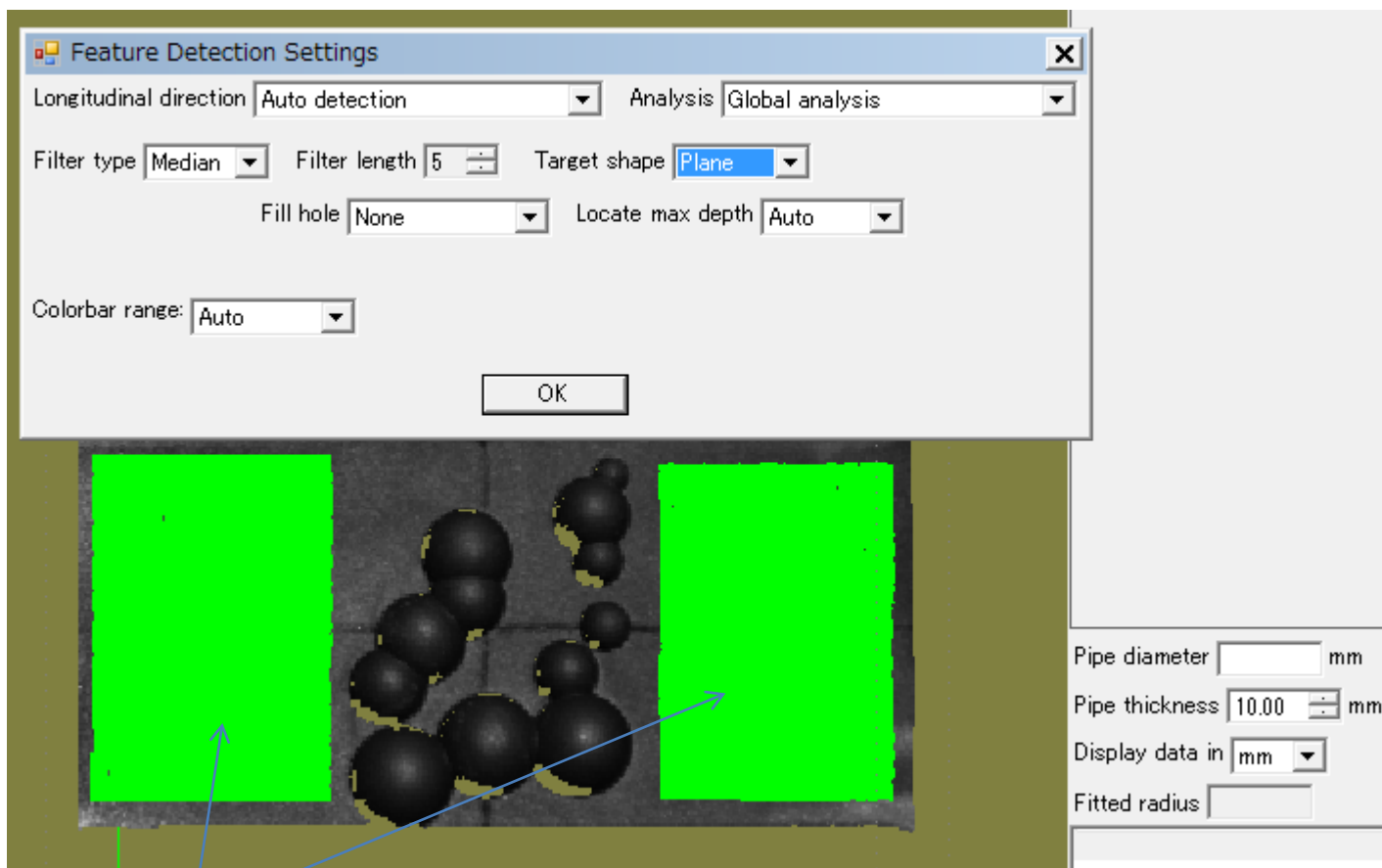
対象物を設置して解析

上図

側面図



領域検出設定



The image shows a software interface for feature detection. At the top is a dialog box titled "Feature Detection Settings" with the following options:

- Longitudinal direction: Auto detection
- Analysis: Global analysis
- Filter type: Median
- Filter length: 5
- Target shape: Plane
- Fill hole: None
- Locate max depth: Auto
- Colorbar range: Auto

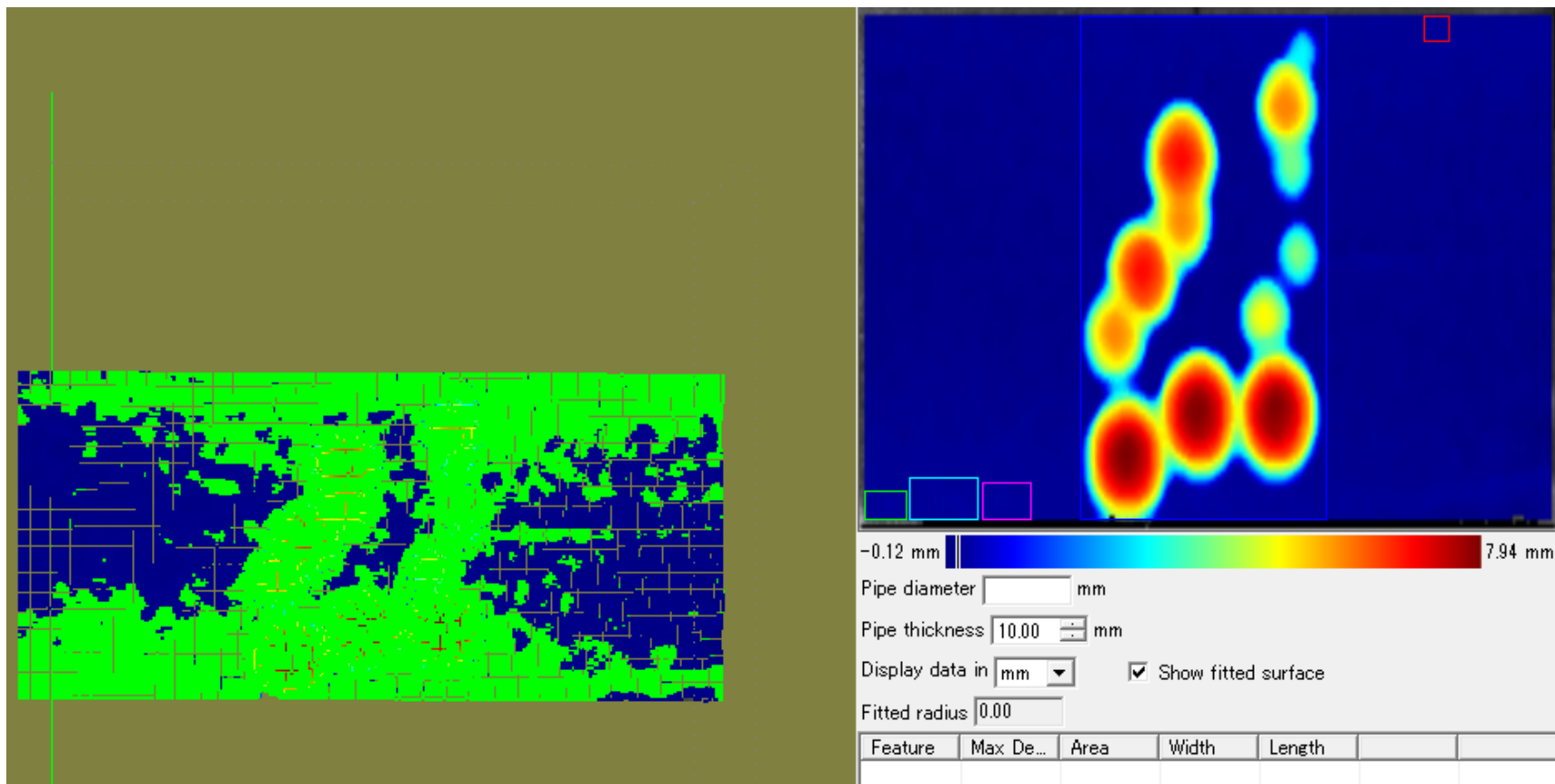
An "OK" button is located below the settings. Below the dialog box is a 3D model of a pipe with several spherical features. Two rectangular regions on the pipe are highlighted in bright green. A blue arrow points from the text below to these green regions. To the right of the 3D model is a panel with the following parameters:

- Pipe diameter: [] mm
- Pipe thickness: 10.00 mm
- Display data in: mm
- Fitted radius: []

母材範囲, 手動で初期設定

3D解析の実行

カラーバーの範囲 = 自動 (デフォルト設定)



カラーバーの範囲 = 7mm~8mm

Feature Detection Settings

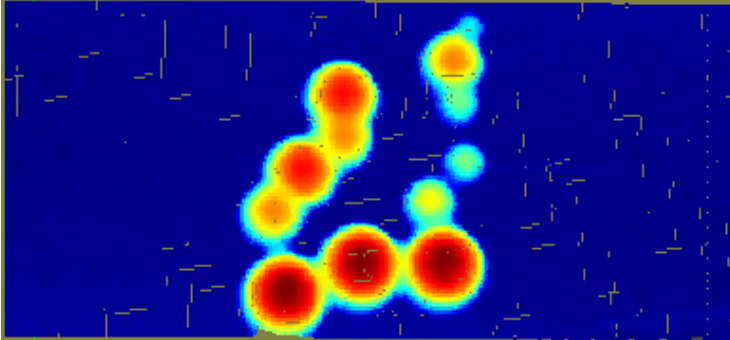
Longitudinal direction: Auto detection | Analysis: Global analysis

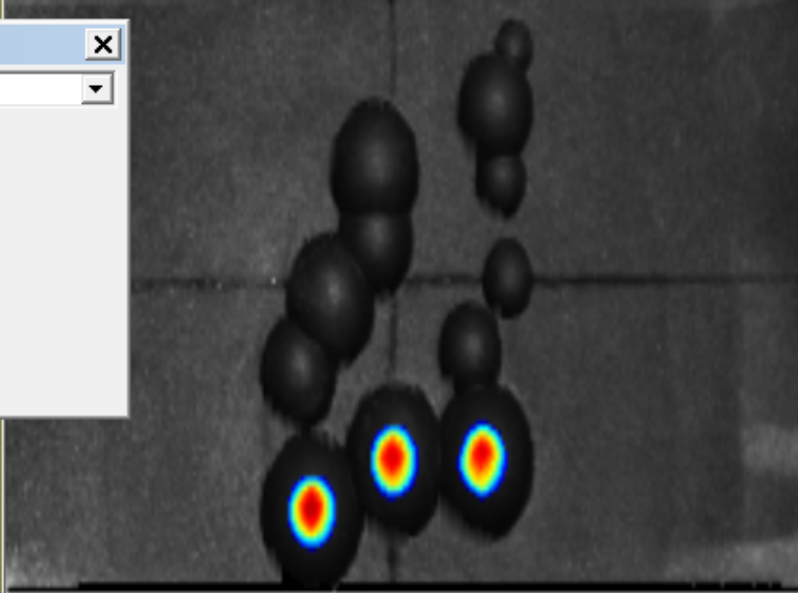
Filter type: Median | Filter length: 5 | Target shape: Plane


Fill hole: None | Locate max depth: Auto

Colorbar range: Manually | Bottom: 7.000 | Top: 8.000

OK





7.00 mm  8.00 mm

Pipe diameter: mm

Pipe thickness: 10.00 mm

Display data in: mm Show fitted surface

Fitted radius: 0.00

Feature	Max De...	Area	Width	Length		

カラーバーの範囲 = 4mm~8mm

Feature Detection Settings

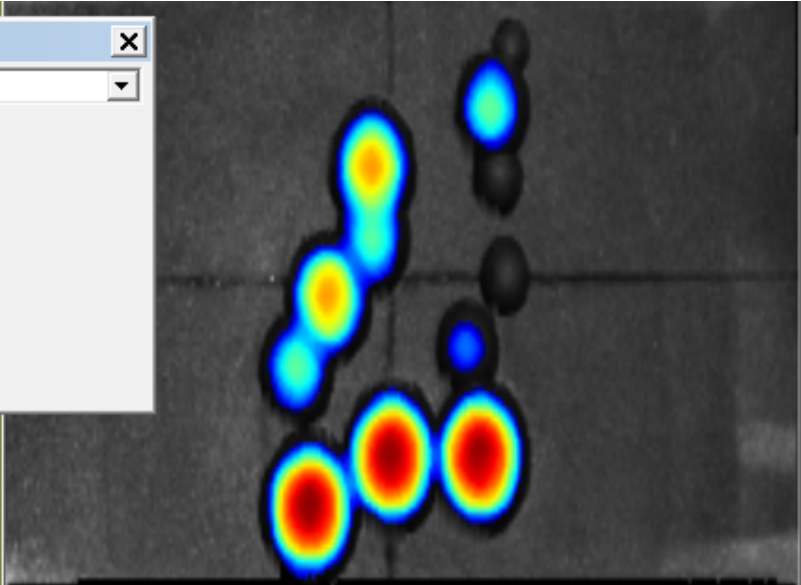
Longitudinal direction: Auto detection | Analysis: Global analysis


Filter type: Median | Filter length: 5 | Target shape: Plane

Fill hole: None | Locate max depth: Auto

Colorbar range: Manually | Bottom: 4.000 | Top: 8.000

OK



4.00 mm  8.00 mm

Pipe diameter: mm

Pipe thickness: 10.00 mm

Display data in: mm Show fitted surface

Fitted radius: 0.00

Feature	Max De...	Area	Width	Length		

